

# RL20

## 4" Line Voltage Incandescent New Construction Recessed Downlight

### Specifications/Features

#### Housing/Mounting

Compact 4" incandescent downlight housing for new construction applications; may be used with drywall, plaster or suspended ceilings, 1/2" to 1-1/2" thick.

The standard new construction housing may be used in insulated ceilings if a minimum 3" distance is maintained all around fixture from insulation material.

Nailer bar hangers for easy installation, integral holding spikes for convenient mounting.

Dual extension bars adjustable for 16" and 24" center joists.

Hanger bars may be extended to rest on T-bar ceilings. Optional clip-on T-bar hangers are also available.

#### Lamp/Electrical

Input Voltage: 120V AC, 60Hz.

(1) 50W R20, 50W PAR20 or 45W PAR16 max.

Prewired junction box with spring-latch access plates.

Approved for through-circuit wiring. Max (8) #12 AWG (4-in/4-out).

Adjustable lamp socket – vertical position.

Thermally protected.

Junction box has (6) 1/2" pry-outs, (1) 1/2" - 3/4" concentric pry-out and (4) Romex pry-outs.

#### Trims

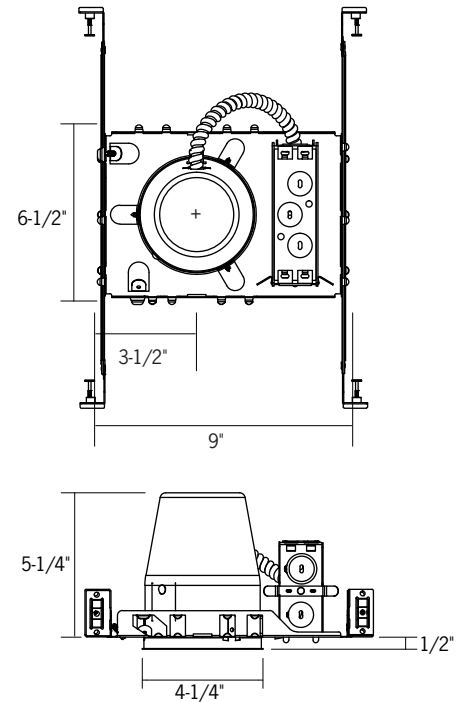
Many different trims options are available to complement any design style. See "Trims for 4" Line Voltage Housings" spec sheet for selection and ordering information.

#### Warranty

This fixture is covered by ConTech's full one year replacement guarantee after date of purchase.

#### Listing

cCSAus Certified. Suitable for damp locations.



Ceiling Opening: 4-3/8"

### Ordering Information

Example Order:

Housing

RL20

Trims

For Trims, see "Trims for 4" Line Voltage Housings" spec sheet.

Options

**CP** - Chicago Plenum  
**HB-20** - 20" T-Bar Hanger Set  
**HB-30** - 30" T-Bar Hanger Set  
**RL20 Converter** - Converts 4" Incandescent Recessed Housings for 120V MR16 Halogen Lamps

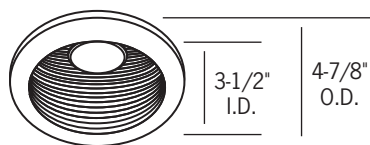
## Trims for 4" Line Voltage RL20 Incandescent Recessed Housings

All trims are compatible with 4 Inch Line Voltage Incandescent Recessed Housings: RL-20, RL20-IC, RL20-R, RL20-SA-R.

**All trims have white trim finish unless specified.**

All trims are cCSAus certified.

All trims are suitable for damp locations; only shower trims are listed for wet locations.



### CTR2001-P

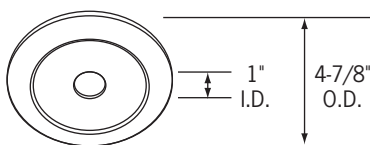
Black Baffled Downlight

### CTR2001W-P

White Baffled Downlight

All steel construction. (3) heat treated spring steel mounting clips. Black socket aiming bracket with screws (provided in carton).

**Max Lamp:** 50W R20, 50W PAR20, 45W PAR16

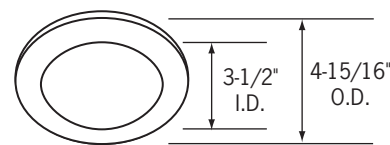


### CTR2005-P

Pin Spot

All steel construction. (3) heat treated spring steel mounting clips. Black socket aiming bracket with screws (provided in carton). Aluminum reflector.

**Max Lamp:** 50W PAR20

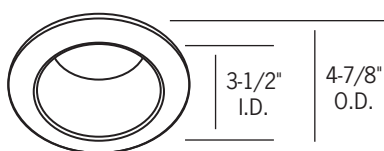


### CTR2011FR-(NK, P)

Flat Frosted Glass Lens Shower Light

All steel construction. (3) heat treated spring steel mounting clips. 1/8" thick heavy duty polyethylene sponge gasket. Wet location listed.

**Max Lamp:** 35W PAR20



### CTR2002-BLK-B

Black Specular Aluminum Reflector, Black Trim

### CTR2002-CLR-P

Clear Specular Aluminum Reflector

### CTR2002-PL-P

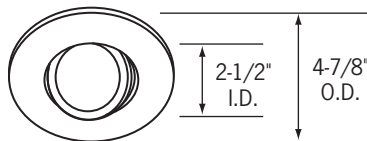
Platinum Aluminum Reflector

### CTR2002-WHT-P

White Specular Aluminum Reflector

All steel construction. (3) heat treated spring steel mounting clips. Black socket aiming bracket with screws (provided in carton).

**Max Lamp:** 50W R20, 50W PAR20, 45W PAR16, 40W A15

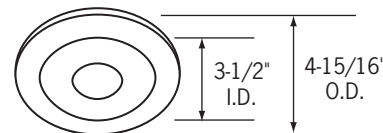


### CTR2007-(P, B, NK)

Surface Adjustable

28° vertical adjustment. All steel construction. (3) heat treated spring steel mounting clips. Lamp retaining sweep spring clip.

**Max Lamp:** 50W PAR20

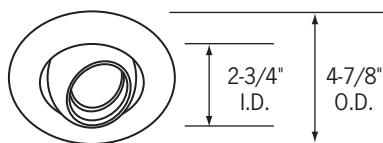


### CTR2011-PH-(NK, P)

Flat Frosted Glass Lens Shower Light with Clear Pin Hole

All steel construction. (3) heat treated spring steel mounting clips. 1/8" thick heavy duty polyethylene sponge gasket. Wet location listed.

**Max Lamp:** 35W PAR20

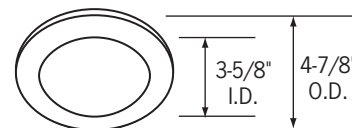


### CTR2008-P

Eyeball

30° vertical adjustment. All steel construction. (3) heat treated spring steel mounting clips.

**Max Lamp:** 50W R20, 50W PAR20, 45W PAR16



### CTR2012-P

Flat Alabite Glass Lens Shower Light

All steel construction. (3) heat treated spring steel mounting clips. 1/8" thick heavy duty polyethylene sponge gasket. Wet location listed.

**Max Lamp:** 35W PAR20



### CTR2003-P

Scoop Wall Wash

1-1/2" x 3-1/2" Aperture

All steel construction. (3) heat treated spring steel mounting clips. Black socket aiming bracket with screws (provided in carton).

**Max Lamp:** 30W R20, 30W PAR20, 35W PAR16

## Reflector/Trim Finishes

### Reflector Finish Options:

**BLK** - Black  
**CLR** - Clear

**WHT** - White  
**PL** - Platinum

### Trim Finish Codes:

**B** - Black  
**NK** - Brushed Nickel

**P** - White  
**S** - Silver